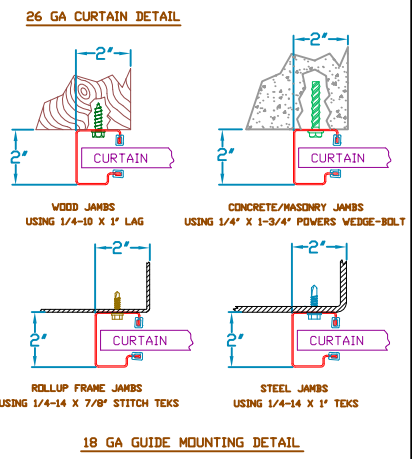
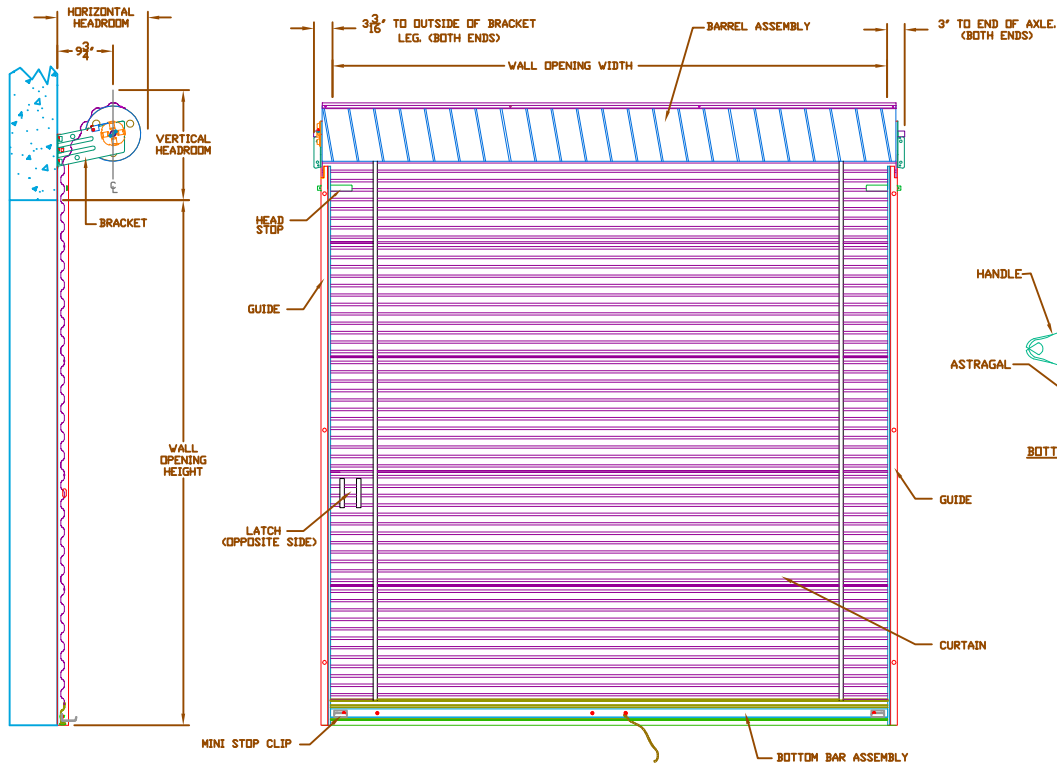
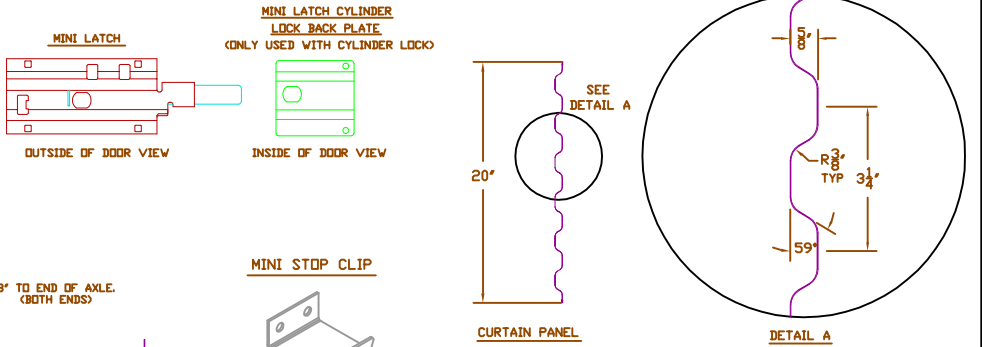


### HEADROOM REQUIRED

OPENING HEIGHT	VERTICAL HEADROOM	HORIZONTAL HEADROOM
THRU 7'-4"	15-1/2"	17"
OVER 7'-4" THRU 8'-8"	16"	17-1/2"
OVER 8'-8" THRU 10'-0"	17"	18-1/4"

- CLEARANCES SHOWN ARE MAXIMUMS, LESSER CLEARANCES MAY BE POSSIBLE.
- ALL OPENING PREPARATION AND FIELD PAINTING SHALL BE PROVIDED BY OTHERS.
- CURTAIN FINISH SHALL BE SILICON POLYESTER PRE-PAINT OVER GALVANIZED GRADE 80 STEEL.
- GUIDES, BRACKETS, BOTTOM BAR ANGLE, HEAD STOPS AND HANDLES ARE ZINC COATED.
- UNLESS OTHERWISE NOTED, LOCKING SHALL BE BY SINGLE MINI SLIDE LATCH BOLTED TO CURTAIN AND SUITABLE FOR DOUBLE PADLOCKS AND SINGLE CYLINDER LOCK BY OTHERS.
- LATCH COVER IS STAINLESS STEEL AND SLIDE IS MAGNETIC STAINLESS.
- SERIES 650I IS AN INSULATED SERIES 650.



### MINI DOOR SERIES: 650/650I

PROJECT:	
ARCHITECT:	
CONTRACTOR:	
DISTRIBUTOR:	
PLANT:	
DRAWN BY:	DATE:
APPROVED BY:	DATE:
ENGR. CERT. NO:	JANUS INTERNATIONAL CORPORATION 134 EAST LUKE ROAD TEMPLE, GA 30179-4435 770-562-2850 FAX: 770-562-2264
DRAWING NUMBER:	
SHT. OF	

FACTORY ORDER NUMBER	DOOR SERIES		QTY	OPENING SIZE		JAMB TYPE				OUTSIDE CURTAIN COLOR	ADDED OPTIONS
	650	650I		WIDTH	HEIGHT	STEEL	CONC./MAS.	WOOD	ROLLUP FRAME		

REVISED: 4-30-04